

**Cory Levy**  
**Presents**

**PINK**  
*and*  
**PURPLE**

**A  
C  
C  
R  
E  
T  
I  
O  
N**

# ***TABLE OF CONTENTS***

## ***WRITING***

Project Description 1

---

Project Concept 2

## ***STUDIES***

Maquette 4

---

Observational Drawing Inspiration 6

---

Human Scale Reference 8

## ***WORKING DRAWINGS***

Orthographic Projections 9

---

Base Frame Plan View 13

---

Details 14

---

Installation Anchoring Method 17

Cory Levy, Artist  
Pink and Purple Accretion

## Project Description

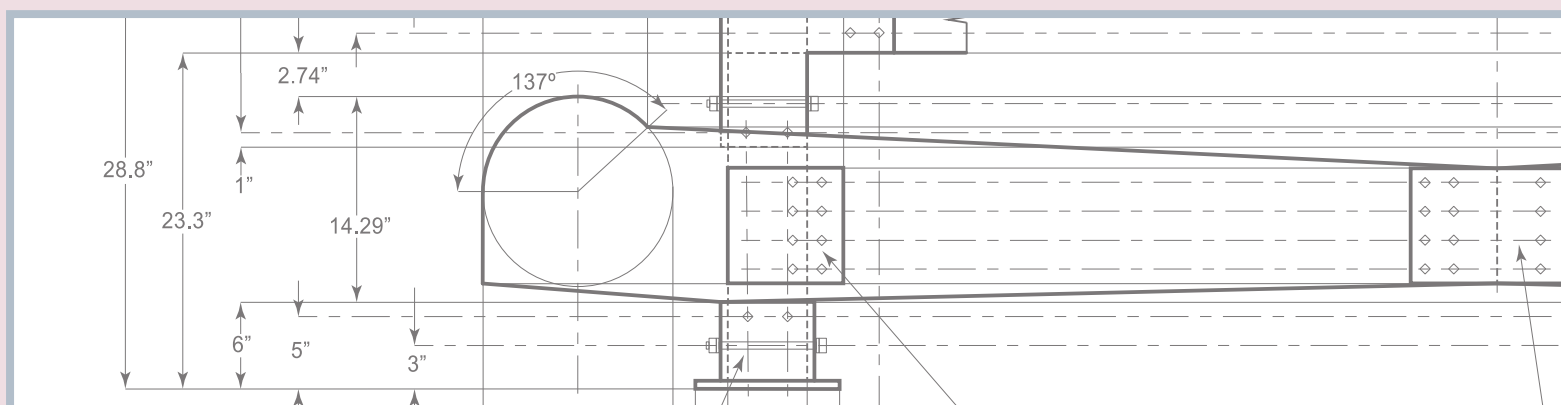
Pink and Purple Accretion is my proposal of a public sculpture to be exhibited for up to one year in a New York City park. This wood and metal structure is designed to span the total dimensions of 8' x 8' 8 5/8" x 8' 8 5/8" and weigh approximately 836 lbs. Its Extra MDF panels and lumber would be joined 1/8" thick steel brackets and bolts. For safe transportation, all parts can be separated in my studio and then reassembled on-site. I've accommodated for screw anchors to fasten the sculpture's post-base brackets into a concrete surface. Locations that include a level, preexisting slab would be ideal for installation. However, if necessary, concrete blocks may also be dug into the ground. Positioning these four blocks underneath each post base, similar to the process of installing a residential deck, will enable secure anchoring under harsh weather conditions.



The concept of Pink and Purple Accretion demonstrates an interpretation of my perception with an attention divergence (AD) and a red-green color processing divergence (RG-CPD). It is a monument of labor devoted to the acceptance and celebration of neurodiversity. This love can be shared with the community as a publicly accessible landmark, and informative source. A QR code mounted at the installation will lead viewers to the trailhead of various online resources. Some are the concept behind Pink and Purple Accretion, consensual credits to all people and entities who considerably assisted this project's development, my theory writing, research citations, and breadth of related artworks.

A relationship between Pink and Purple Accretion and my observation of life is comparable to that held between symbols and sound. Letters translate to linguistics and musical notes encapsulate instrumental melodies. I recorded internal stimulus with graphite marks on paper, then translated this preliminary drawing into sculpture schematics. Minimizing ambiguous features in my artwork creates a more accurate physicalization of my cognitive experience.

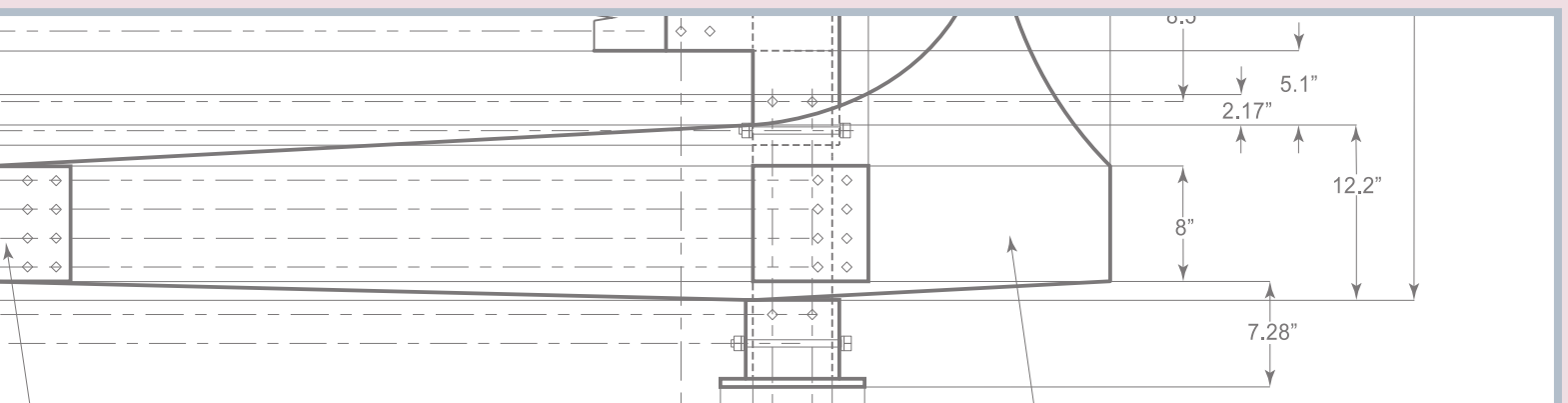
My sculpture design is mathematically structured. It recreates a full range of depth using only shapes transferred from a preliminary observational drawing included in this proposal. I've developed a series of forty-seven working drawings, and a to-scale maquette to thoroughly communicate this method of construction. At all three-quarter views of the maquette panels of material are arranged along the pattern of a three-dimensional graph.

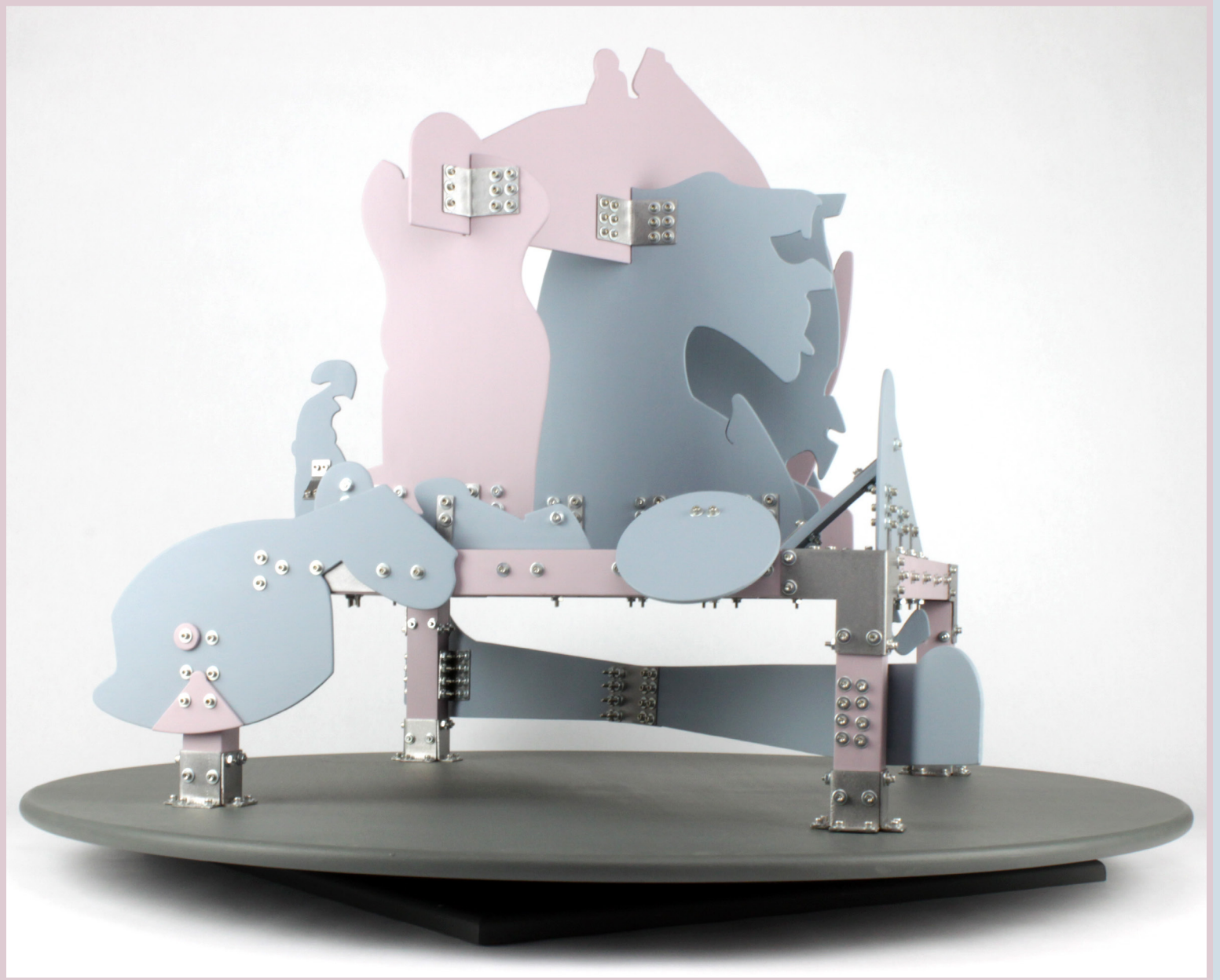


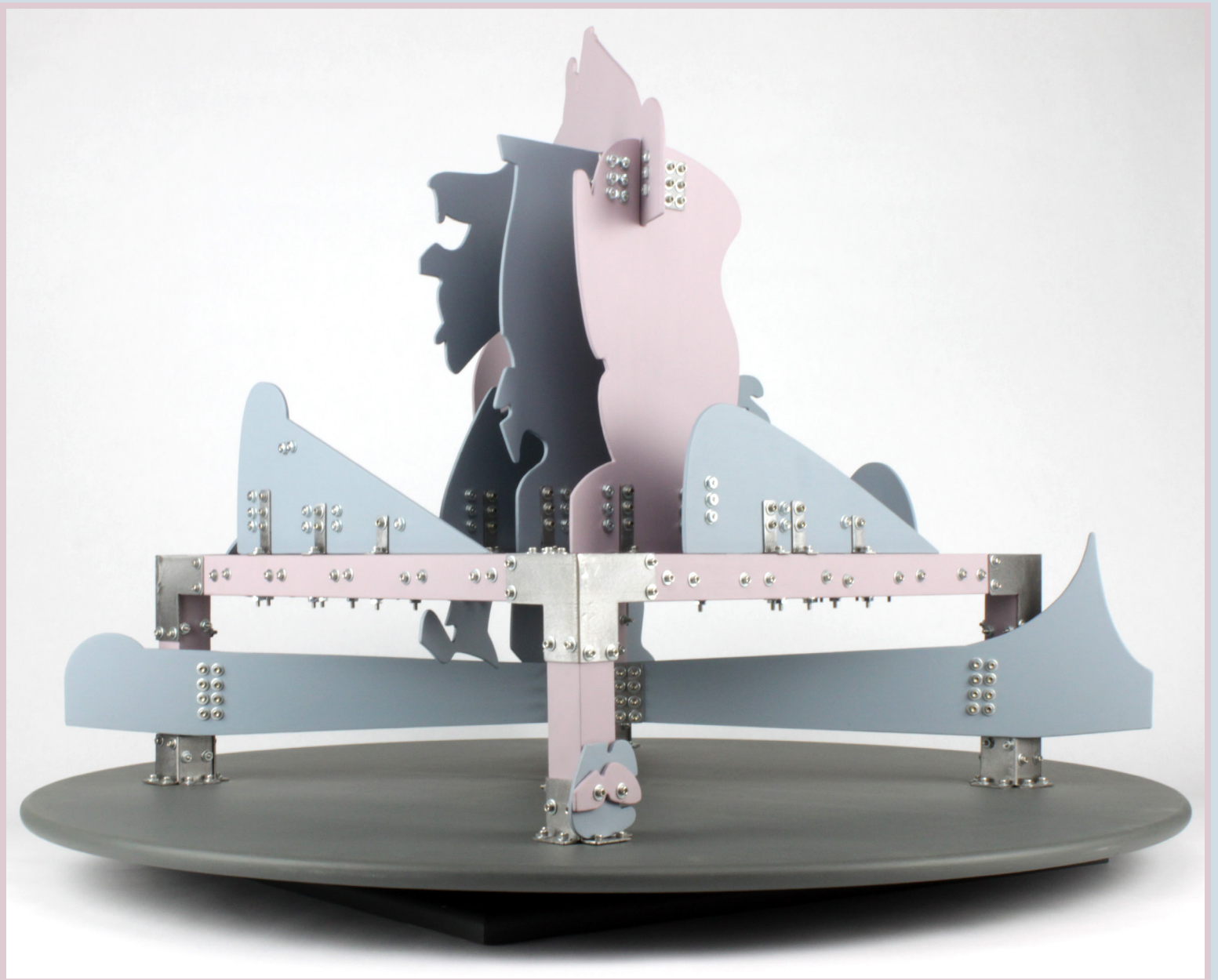
Orthographic projection working drawings, on the other hand, flatten a three-dimensional object onto a single plane x and y graph. In my orthographic plan view, most panels run horizontally through the plane, parallel to an imaginary x-axis. Others are vertical, aligning with the y-axis. All these panels are layered by intervals of vacant space. Meanwhile, two exceptions intersect the composition at irregular angles, acting as slopes.

Constituent panels of the project represent sections of my complete visual field. All shape contours included were refined within periods of hyperfixation, or hyper-focus. This is a common function for people within the attention divergence community that augments the senses towards a predilection while nullifying superfluities. Intervals of hyperfixation resulted in the development of an accumulative collaged composition.

The pigments I chose to paint my public sculpture were also discovered during this attentive state. However, their appearance was especially affected by my red-green color processing divergence. According to multiple results from the Ishihara Color Plate Test, I have a relationship with color that significantly deviates from people who are neurotypical. My proclivity to fixate upon a singular color mass within a field of hues amplifies as the variation between color families becomes muted, or nears achroma. It was during this scenario that I laid eyes on what I perceive as the pink and purple of Pink and Purple Accretion.

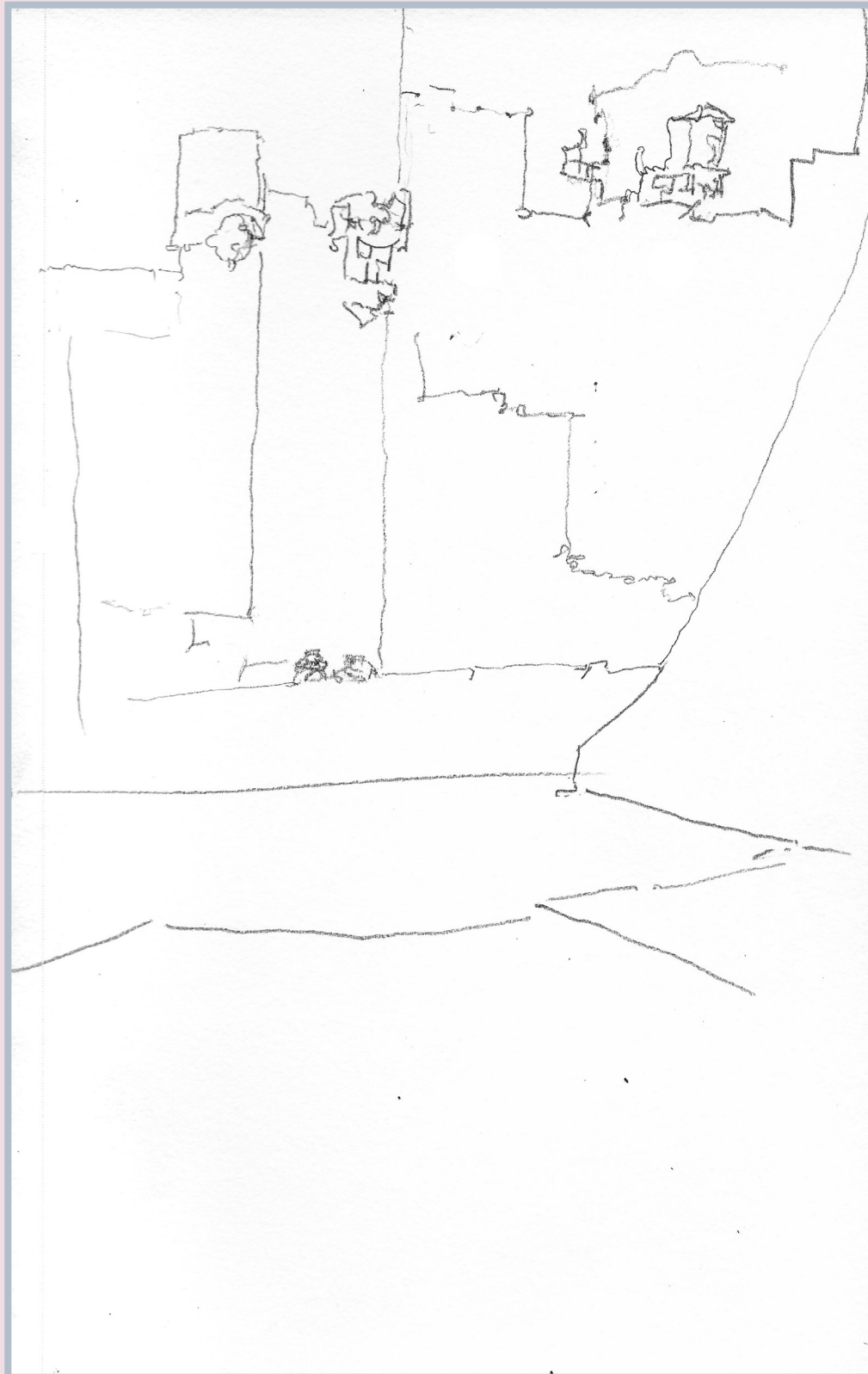




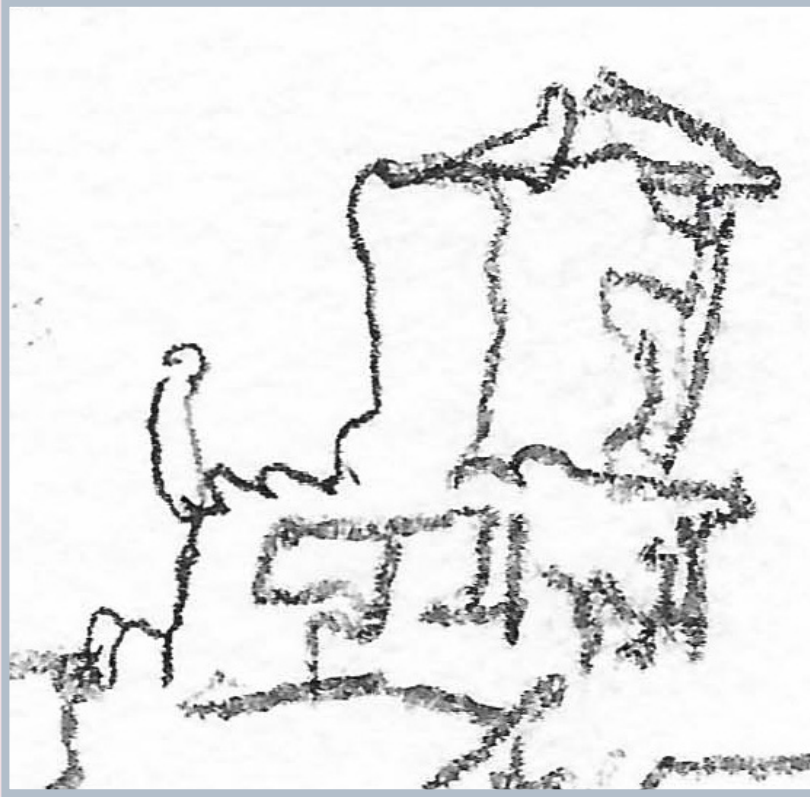


Pink & Purple Accretion Maquette  
2023  
Mixed media  
21 1/4" x 29 1/8" x 29 1/8"

Terrace Overlook at Lunchtime  
2020  
Graphite on paper  
10" x 6"

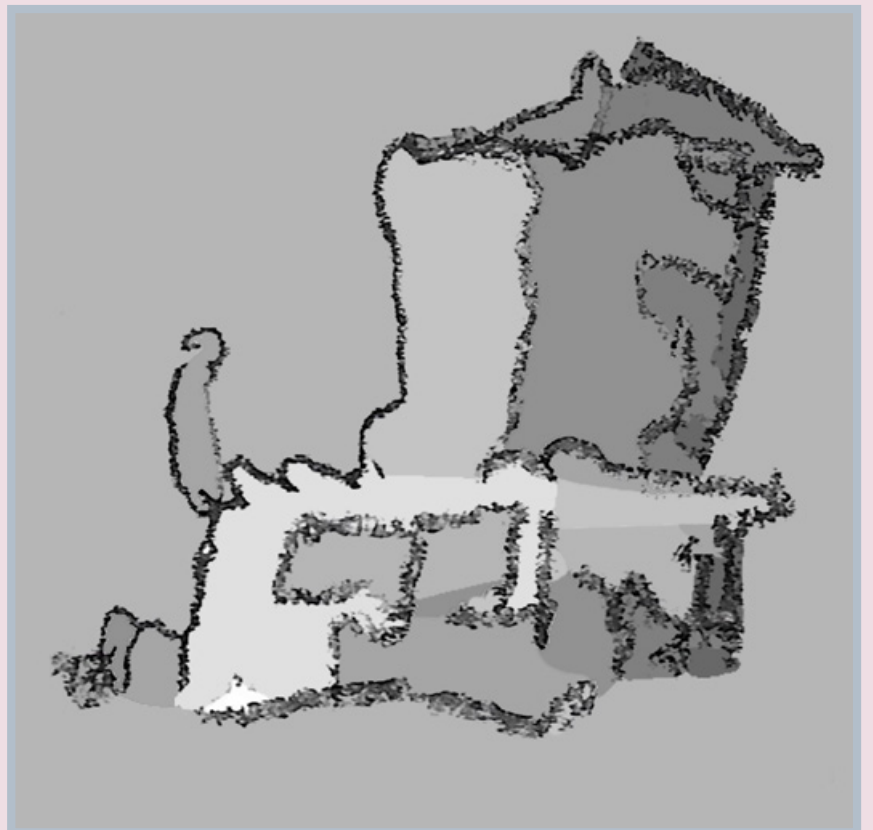


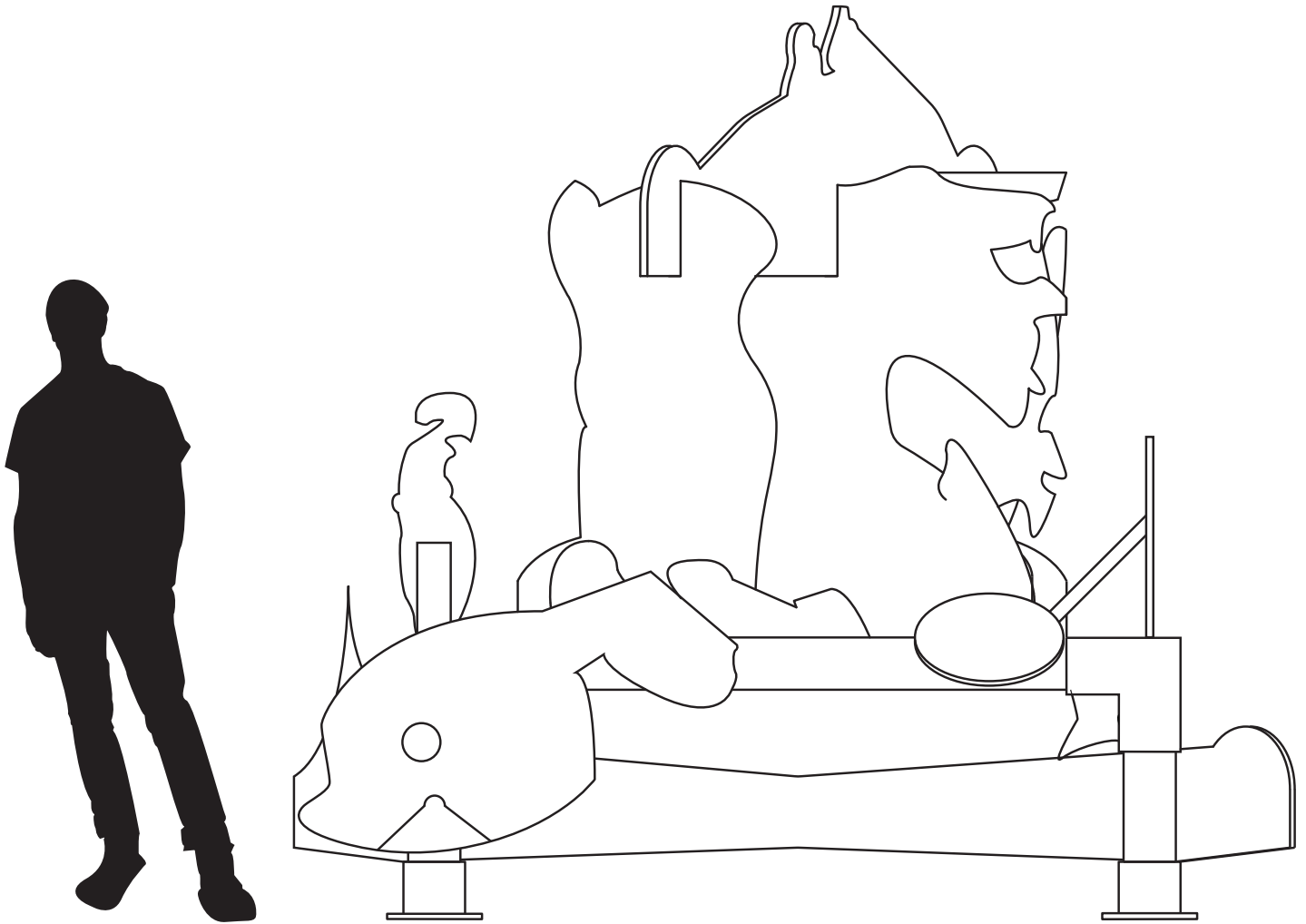


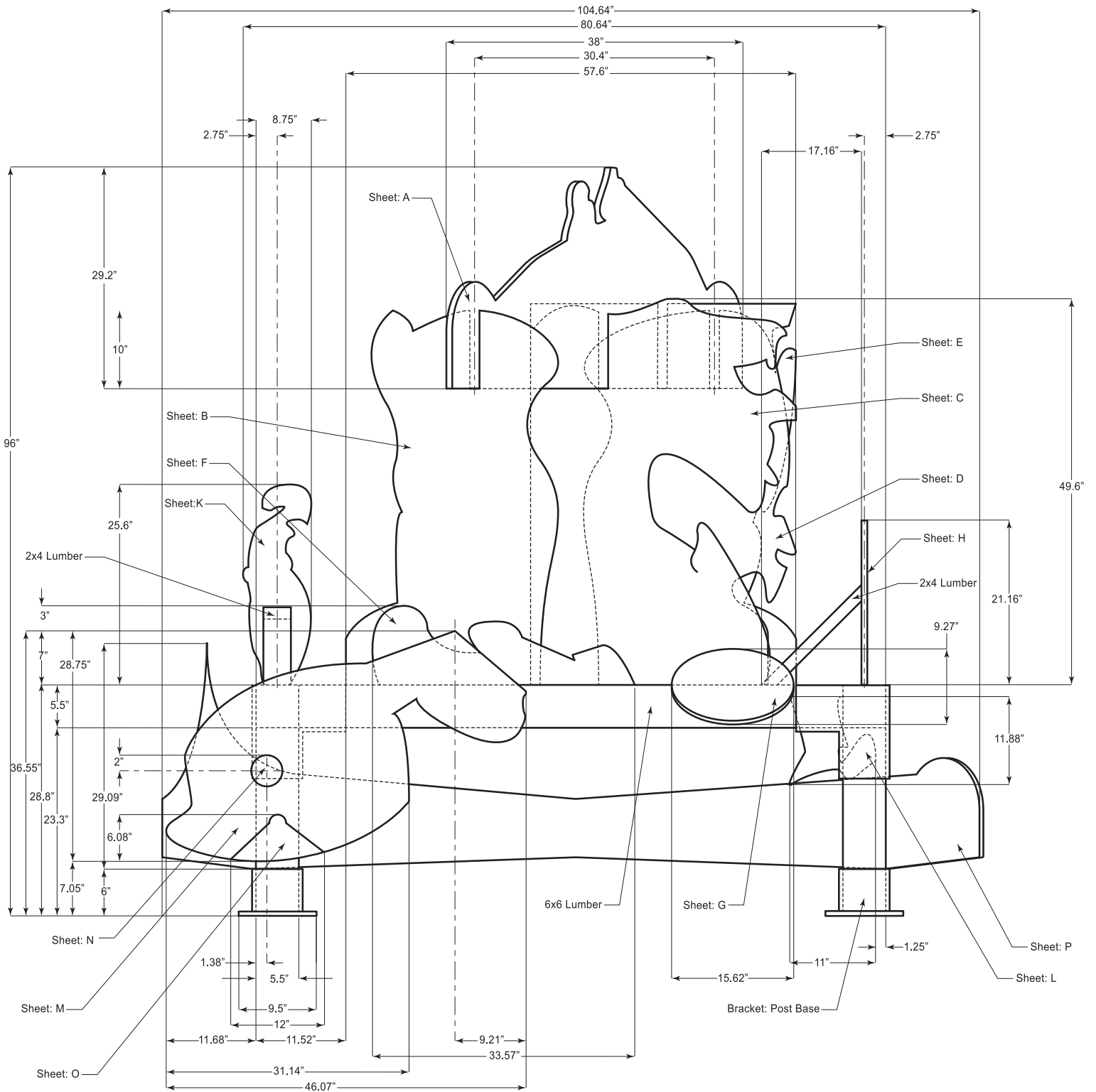


Terrace Overlook at Lunchtime  
(Close-Up)  
2020  
Graphite on paper

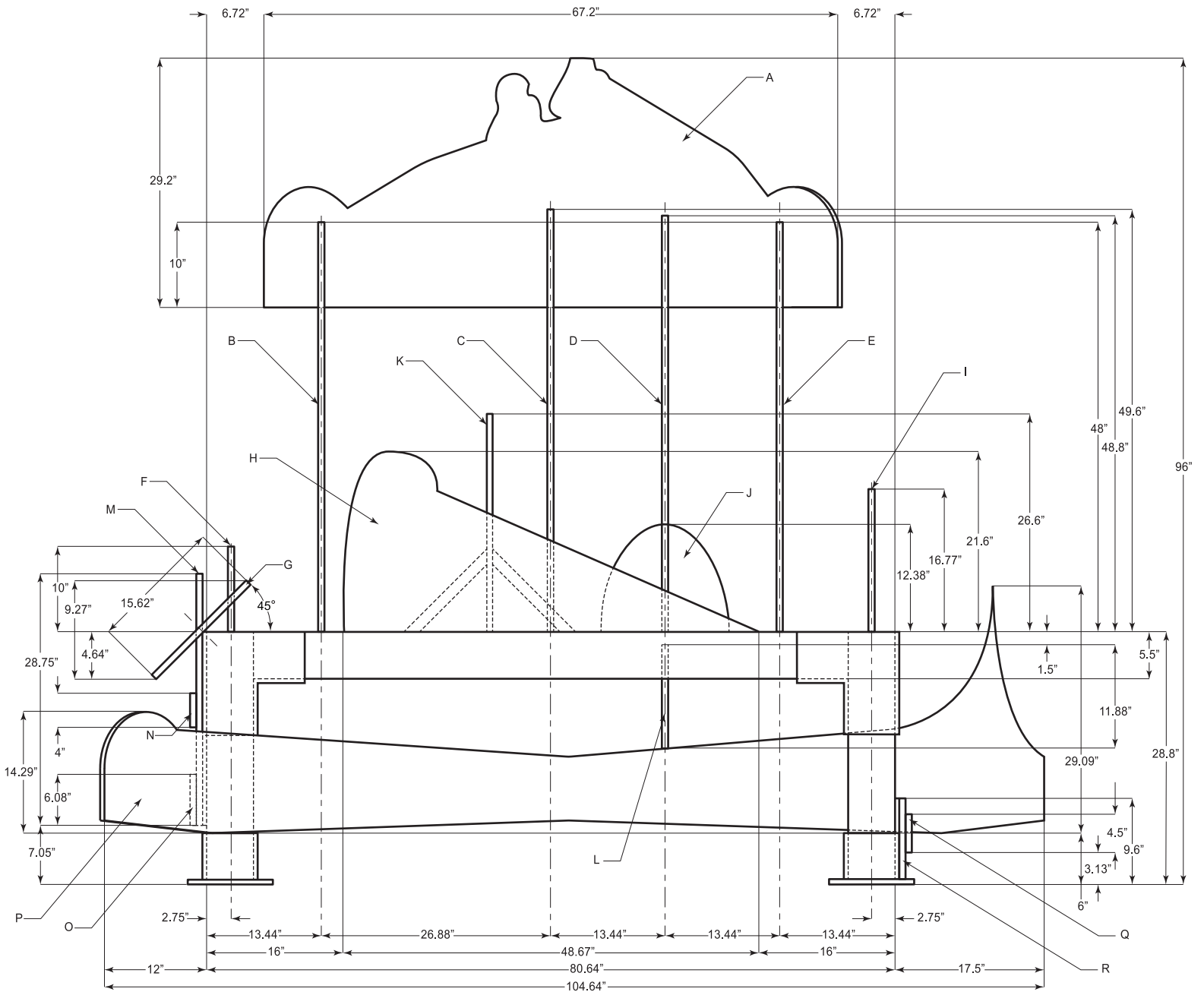
Pink and Purple Accretion,  
Shaded Design  
2020  
Mixed media

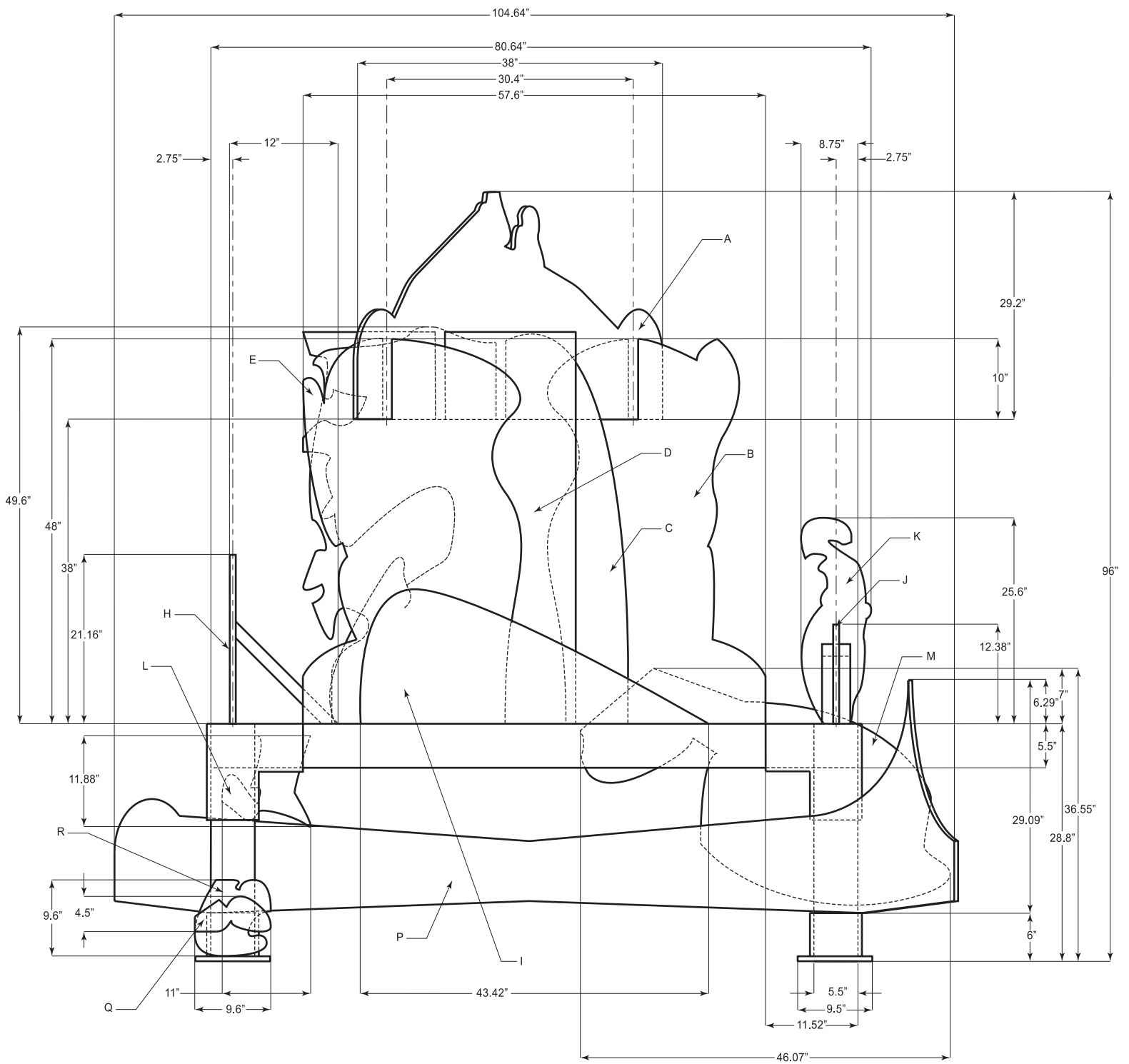


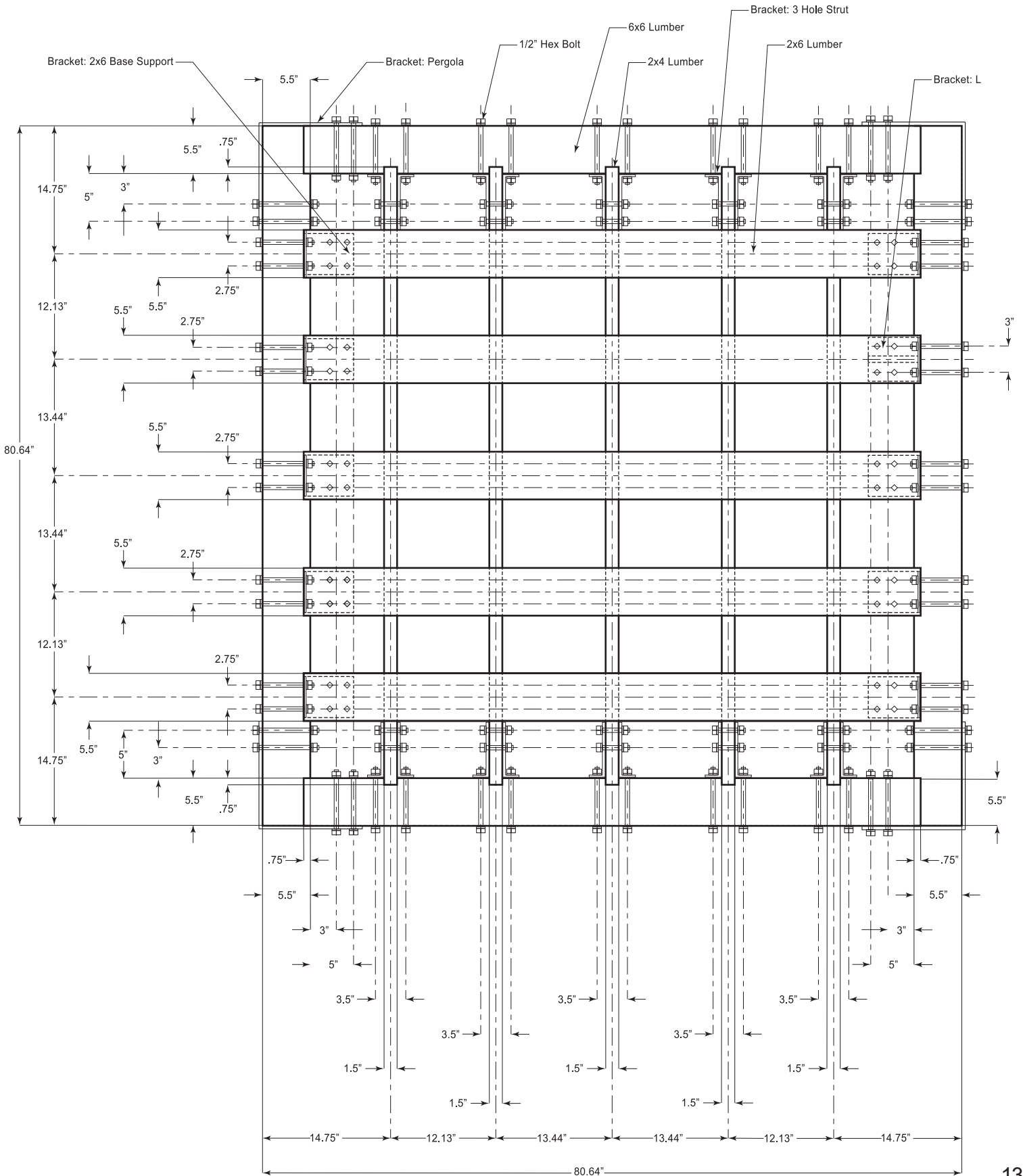






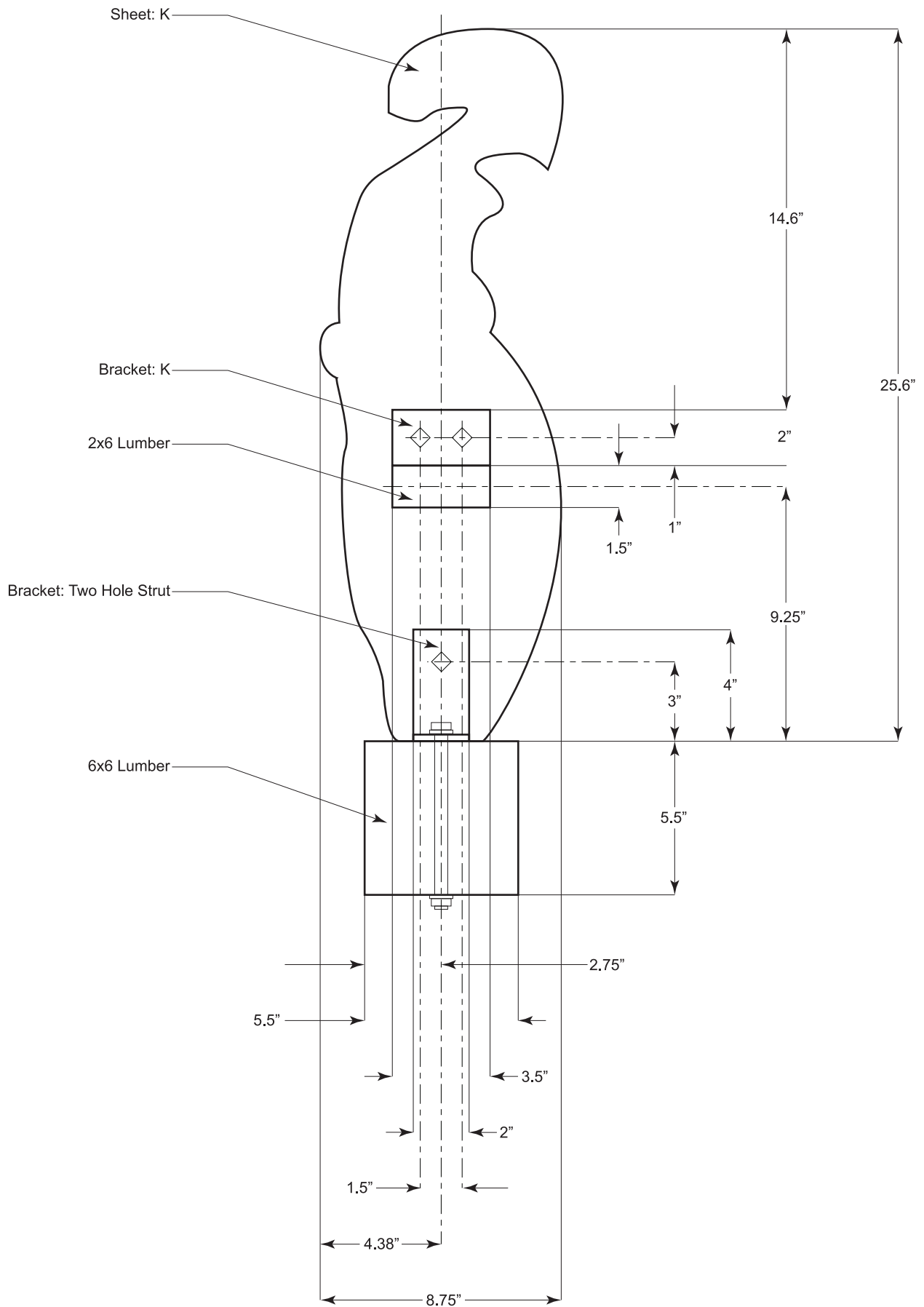






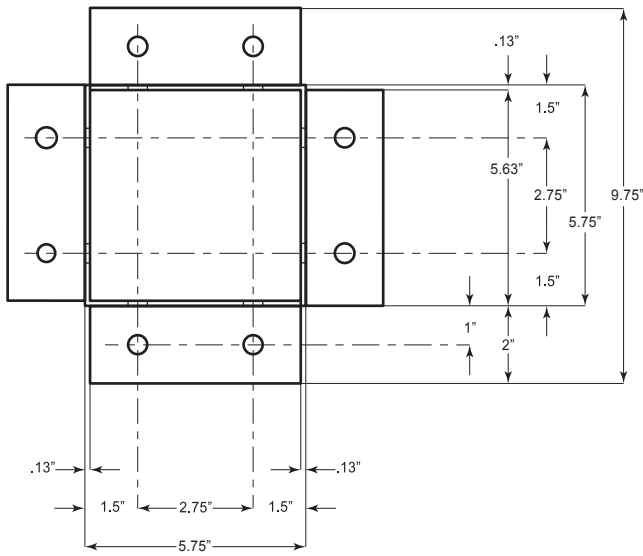




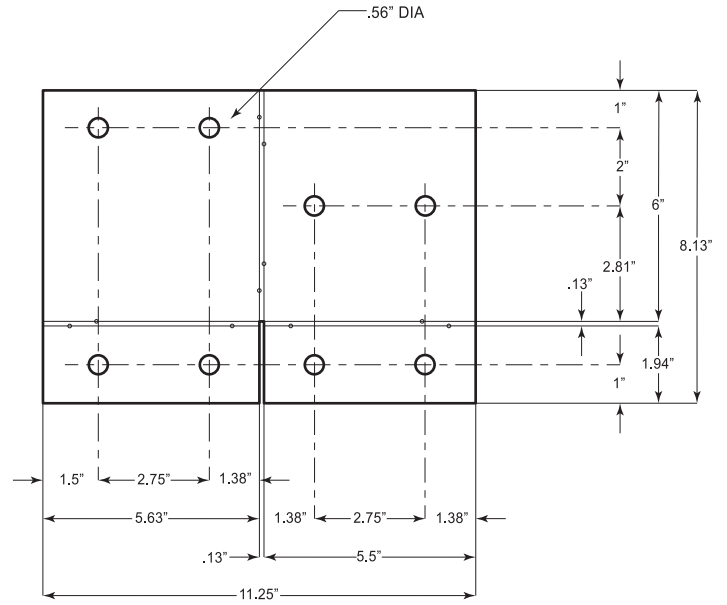




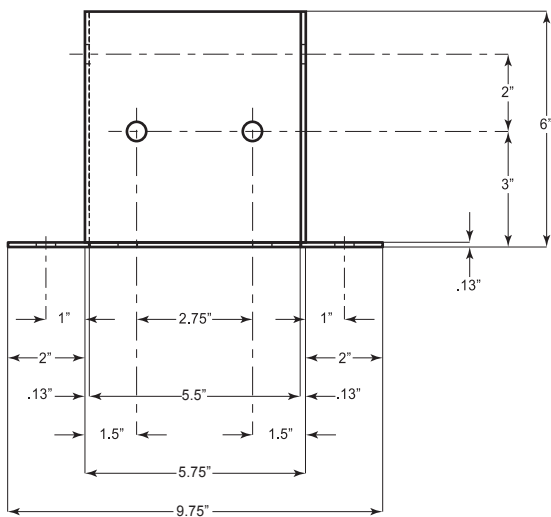
Plan View



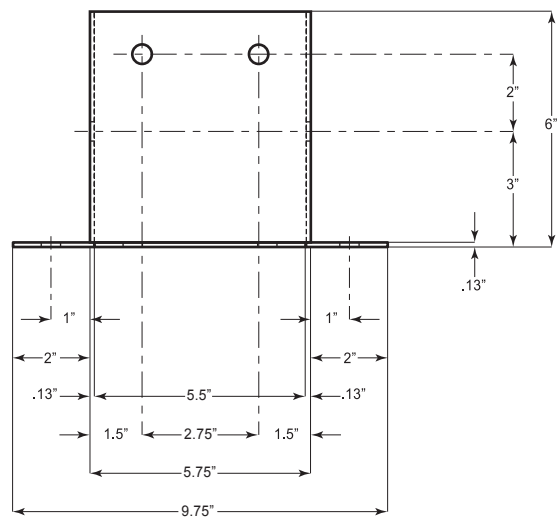
Flat Pattern

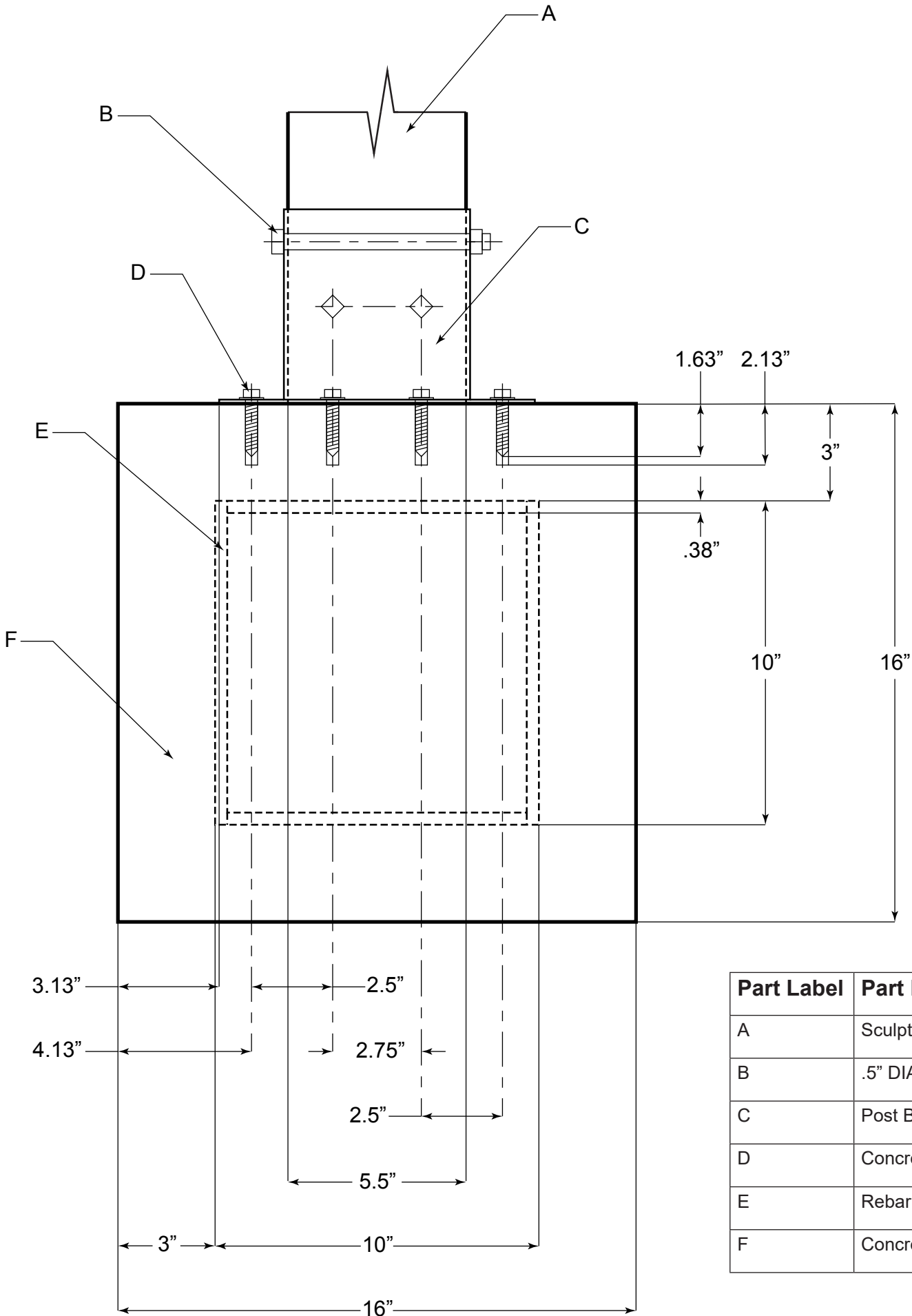


Front Elevation



Right Side Elevation





Part Label	Part Name
A	Sculpture Post
B	.5" DIA Bolt
C	Post Base Bracket
D	Concrete Screw Anchor
E	Rebar
F	Concrete Block

