

Cory Levy

Presents

**PINK
and
PURPLE**

Public Sculpture Proposal

**A
C
C
R
E
T
I
O
N**

TABLE OF CONTENTS

WRITING

Proposal Description 1

Proposal Concept 2

STUDIES

Maquette 4

Observational Drawing Inspiration 6

Human Scale Reference 8

WORKING DRAWINGS

Orthographic Projection 9

Base Frame Plan View 13

Details 14

Installation Anchoring Method 17

Cory Levy, Artist
Pink and Purple Accretion

Proposal Description

Pink and Purple Accretion is my public sculpture proposal to exhibit for up to one year in a New York City park. I designed this wood and metal structure to span the dimensions of 8' x 8' 8 5/8" x 8' 8 5/8" and weigh approximately 836 lbs. Steel brackets and bolts join a composition of Extria MDF panels. Before installation, all parts can be separated in my studio, transported, and then reassembled on-site. I've accommodated for screw anchors to fasten the sculpture's post-base brackets into a concrete surface. Locations that include a level, pre-existing slab would be ideal for this project. Alternatively, I can bury four reinforced concrete blocks underneath each post base. Both anchoring procedures will hold securely under harsh weather conditions.



Pink and Purple Accretion demonstrates an interpretation of my perception with an attention neuro-divergence (AND) and a red-green color processing divergence (RG-CPD). It is a monument of labor devoted to accepting and celebrating neurodiversity. I want to share this love with the community with a publicly accessible landmark and informative hub. A QR code mounted on or near the installation will lead viewers to a Linktree trailhead of various online resources. Some are the concept behind *Pink and Purple Accretion*, my self-authored article, *AND: Denouncing The ADHD Label, An Opinion Piece*, 2024, and consensual credits to all people and entities who considerably assisted this project's development.

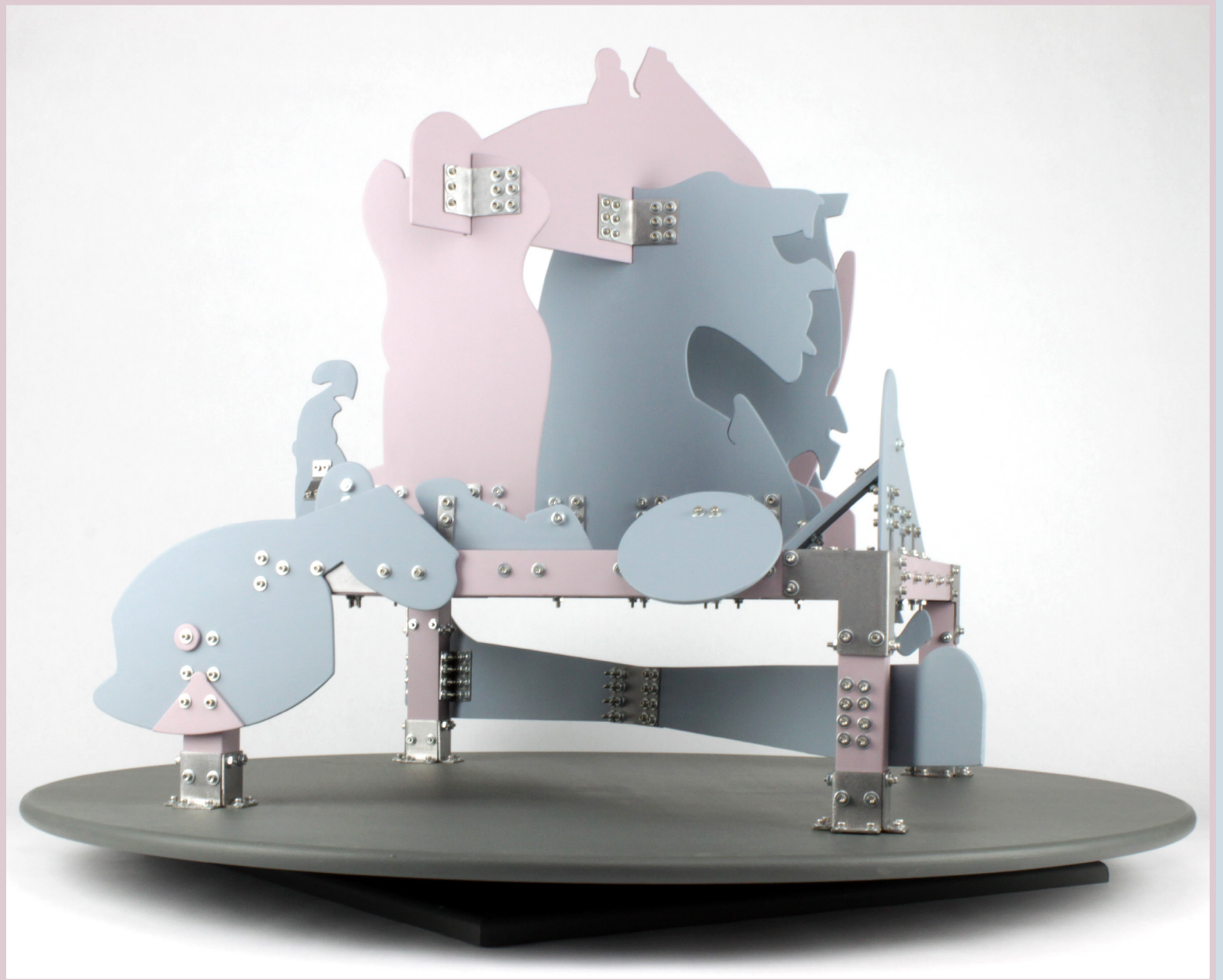
A relationship between *Pink and Purple Accretion* and my observation of life is comparable to that between symbols and sound. Letters translate to linguistics, and musical notes encapsulate instrumental melodies. I recorded internal stimulus with graphite marks on paper, then translated this drawing into sculpture schematics. Minimizing ambiguous features in my artwork creates a more accurate physicalization of my cognitive experience.

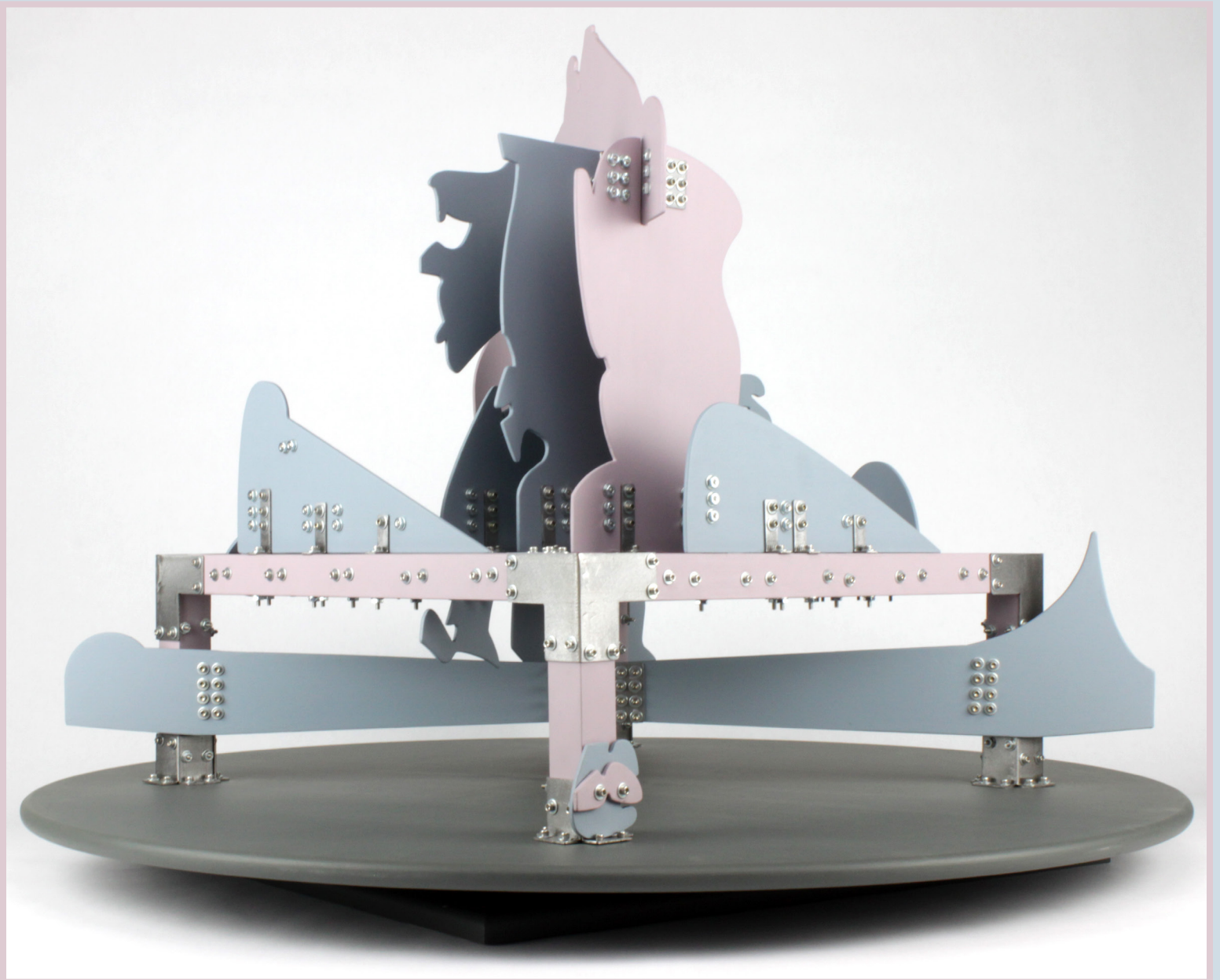
My sculpture design is mathematically structured. It recreates a full range of depth using only shapes transferred from the observational drawing inspiration, *Terrace Overlook at Luncheon*, 2020. I've developed a series of fifty-three to-scale working drawings that are presented in a separate *Proposal Working Drawings* booklet and hand-made a maquette to communicate every construction detail thoroughly.

The *Maquette Rear Three-Quarter View* follows the pattern of a three-dimensional graph. Orthographic projection working drawings, on the other hand, flatten a three-dimensional object onto a single plane x and y graph. In my *Orthographic Projection | Plan View*, most panels run horizontally through the plane, parallel to an imaginary x-axis. Others are vertical, aligning with the y-axis. These panels are all layered by equal intervals of vacant space. Two exceptions: Sheets “A” and “P” intersect the composition at irregular angles, acting as lines with positive or negative slopes.

Constituent panels of the project represent sections of my complete visual field. I refined all shape contours within periods of hyperfixation, the counterpart of ADHD. It amplifies the presence of a singularity and mutes all other stimuli, internal and environmental. Intervals of hyperfixation resulted in the development of an “accretion,” accumulatively collaged composition.

The pigments I chose to paint my public sculpture were realized during this attentive state. Their appearance was also affected by my red-green color processing divergence. According to multiple Ishihara Color Plate Test results, I have a relationship with color that significantly deviates from neurotypical, common-brained people. My tendency to fixate upon a singular color mass within a field of hues amplifies as the variation between color families becomes muted or nears achroma. During this scenario, I laid eyes on what I perceive as the “pink” and “purple” of *Pink and Purple Accretion*.





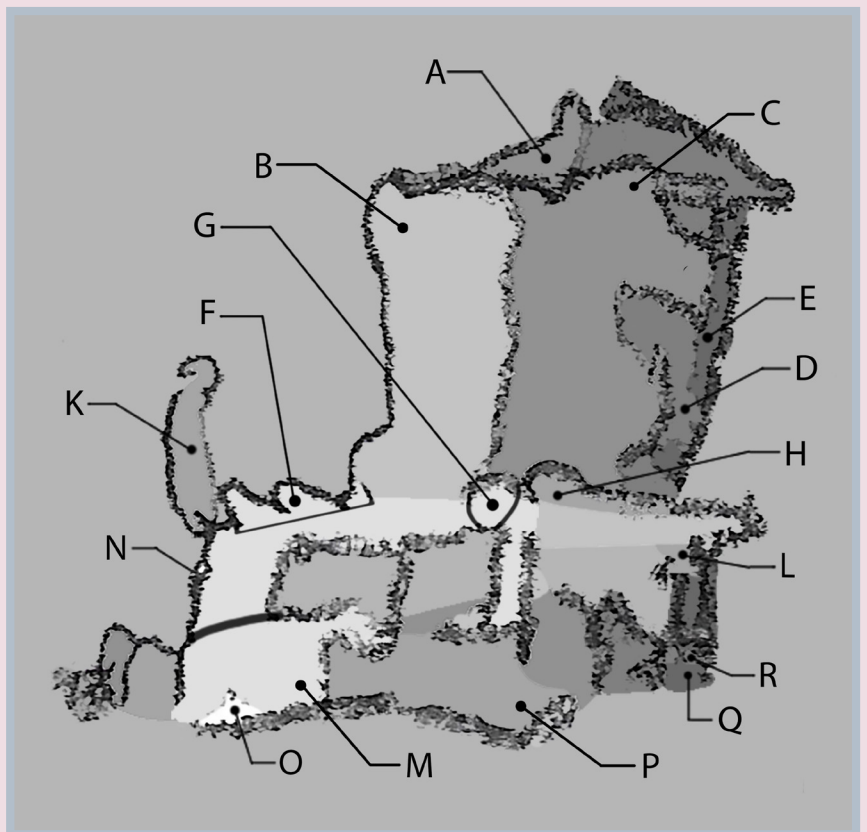
Pink & Purple Accretion Maquette
2023
Masonite, steel, and house paint
21 1/8" x 29 1/8" x 29 1/8"
Scale: 1:5

Terrace Overlook at Lunchtime
2020
Graphite on paper
10" x 6"

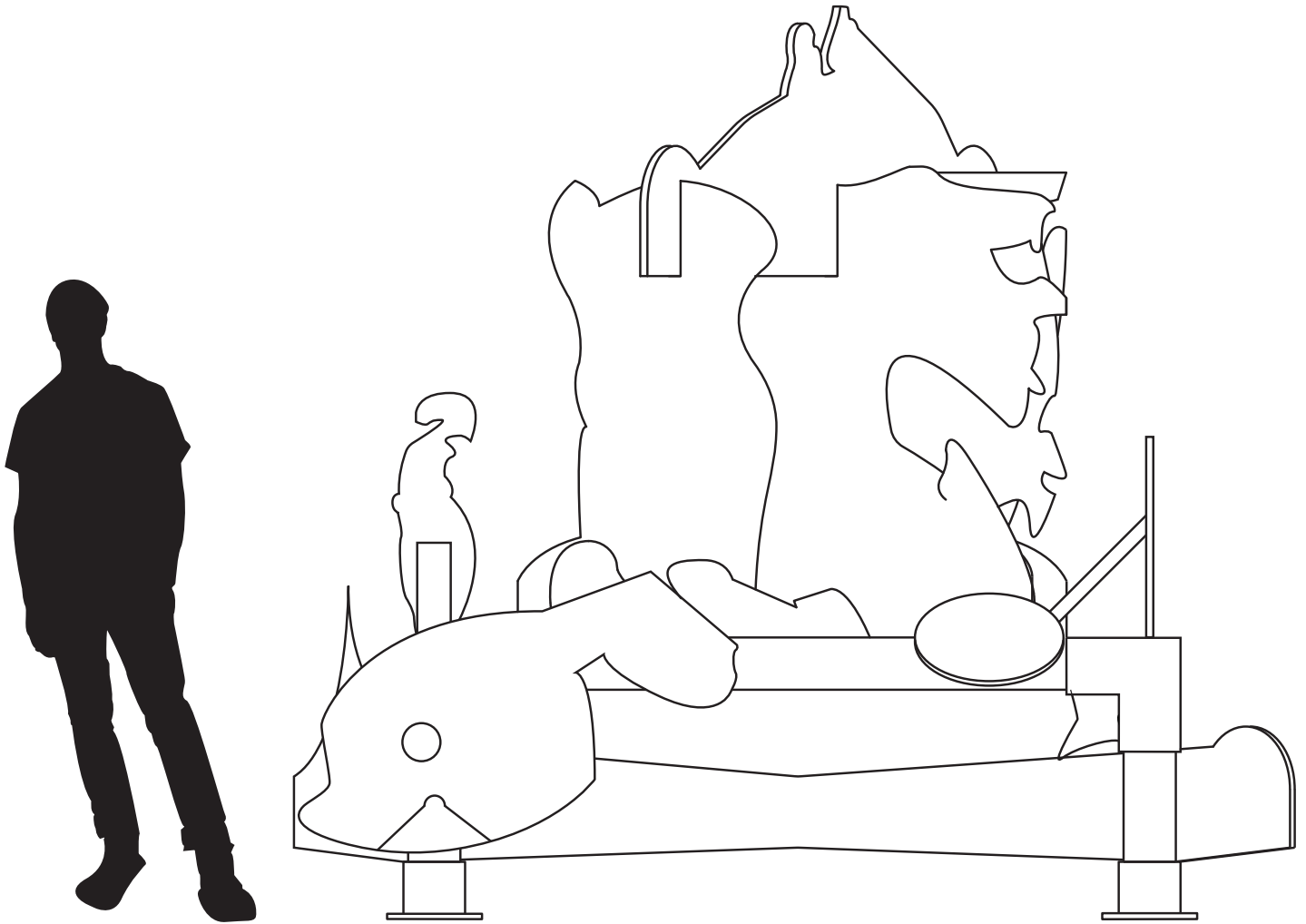


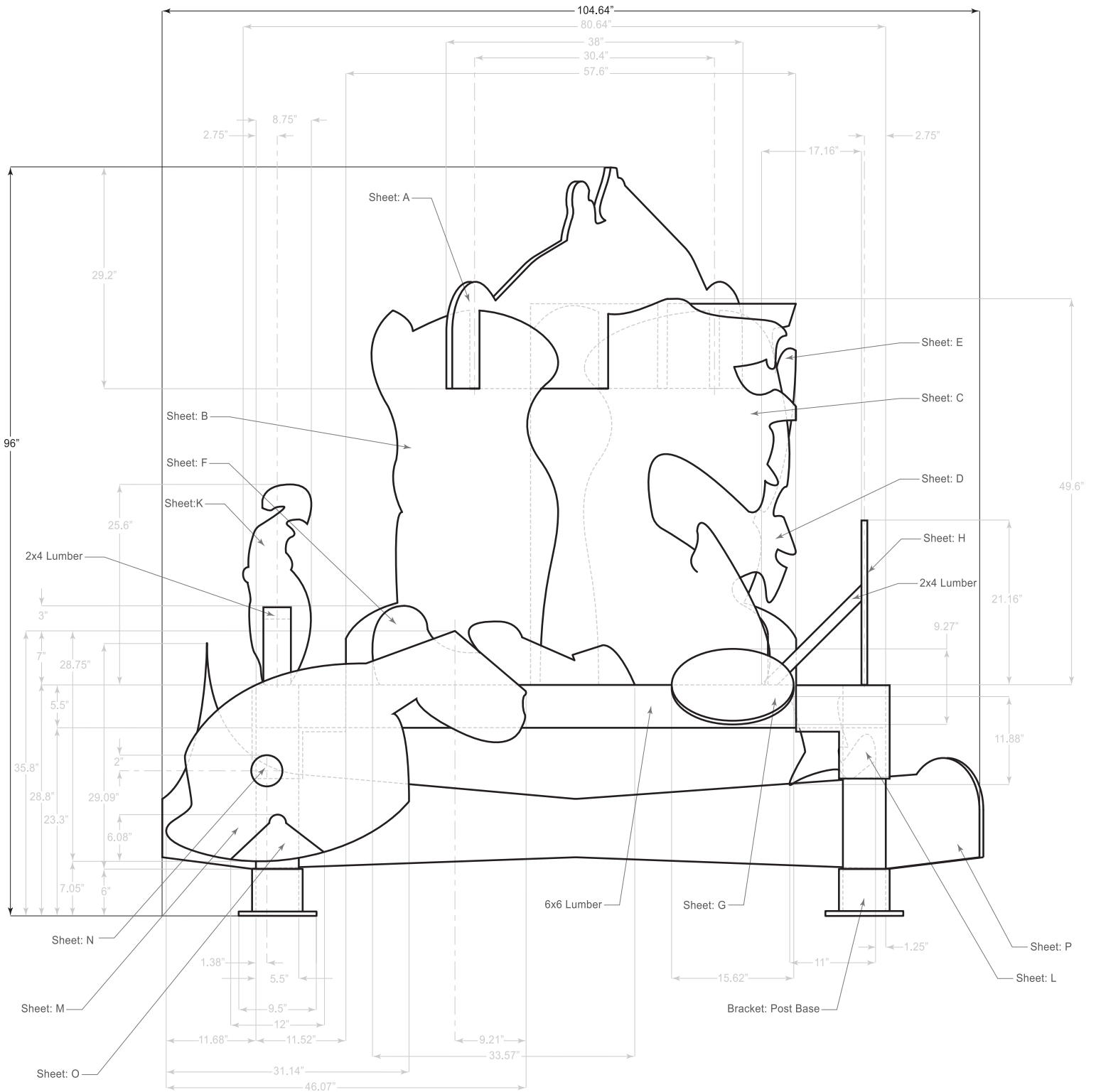


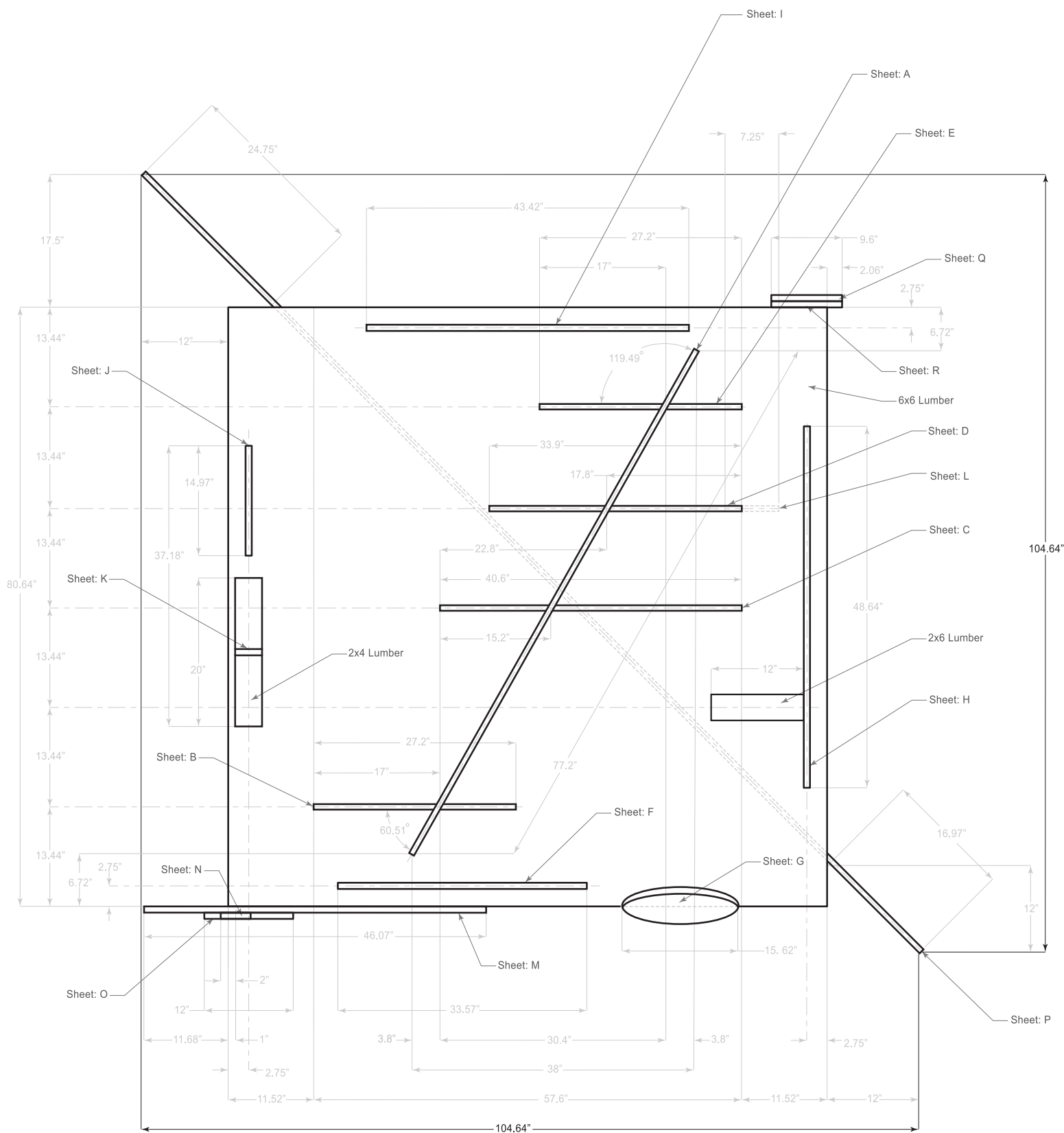
Terrace Overlook at Lunchtime
(Close-Up)
2020
Graphite on paper

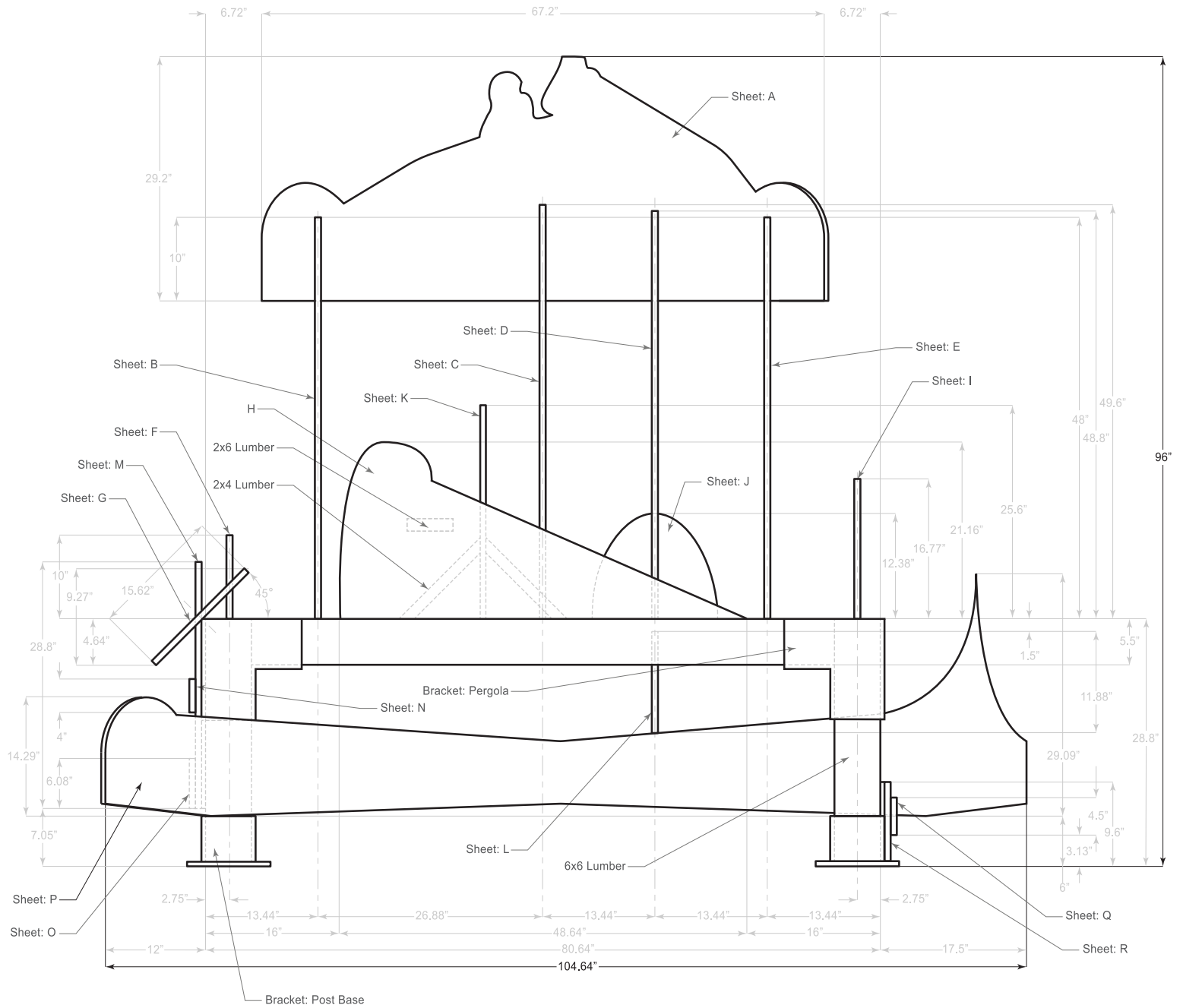


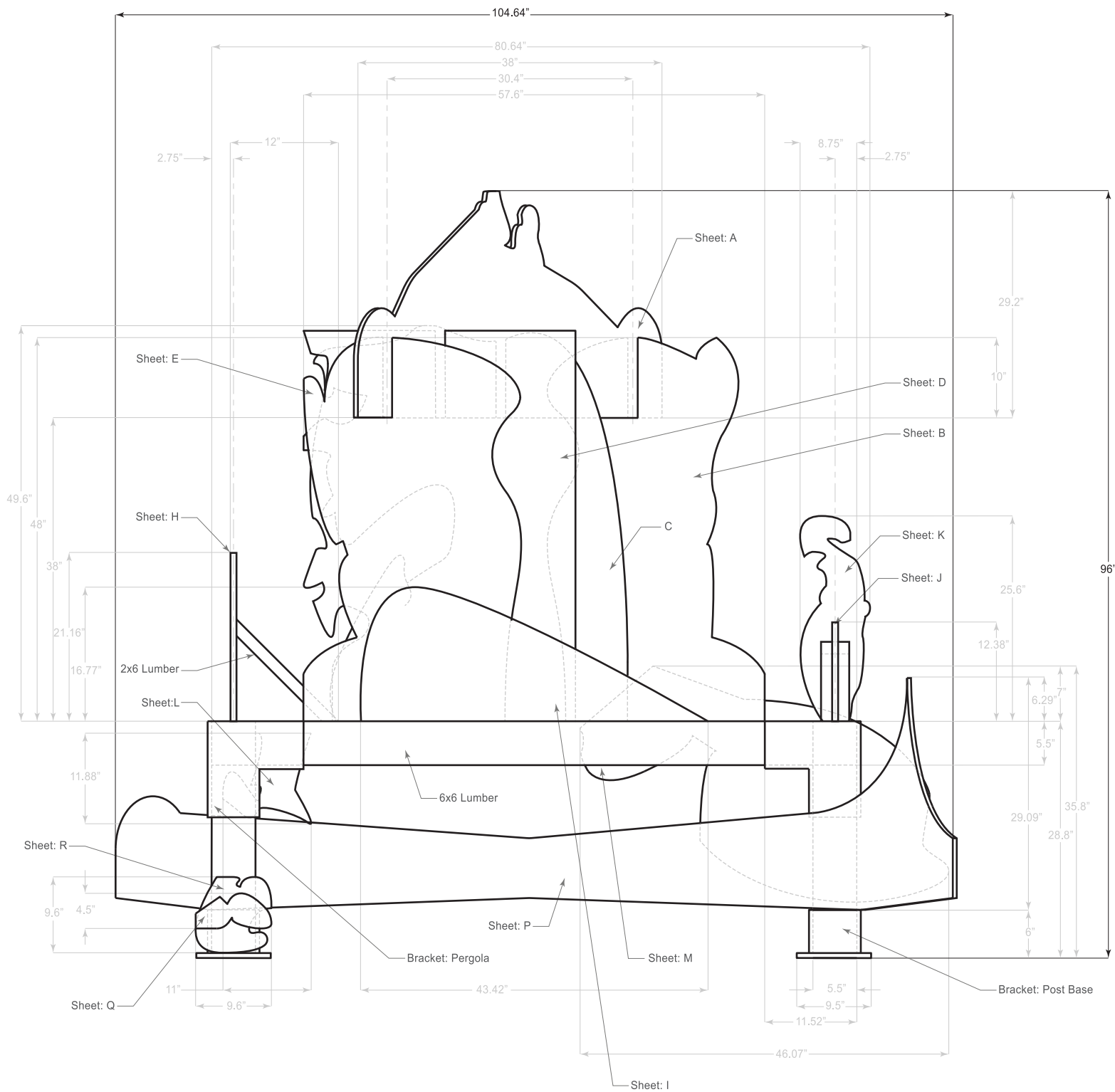
Pink and Purple Accretion,
Preliminary Sculpture Design
2020
Graphite and digital

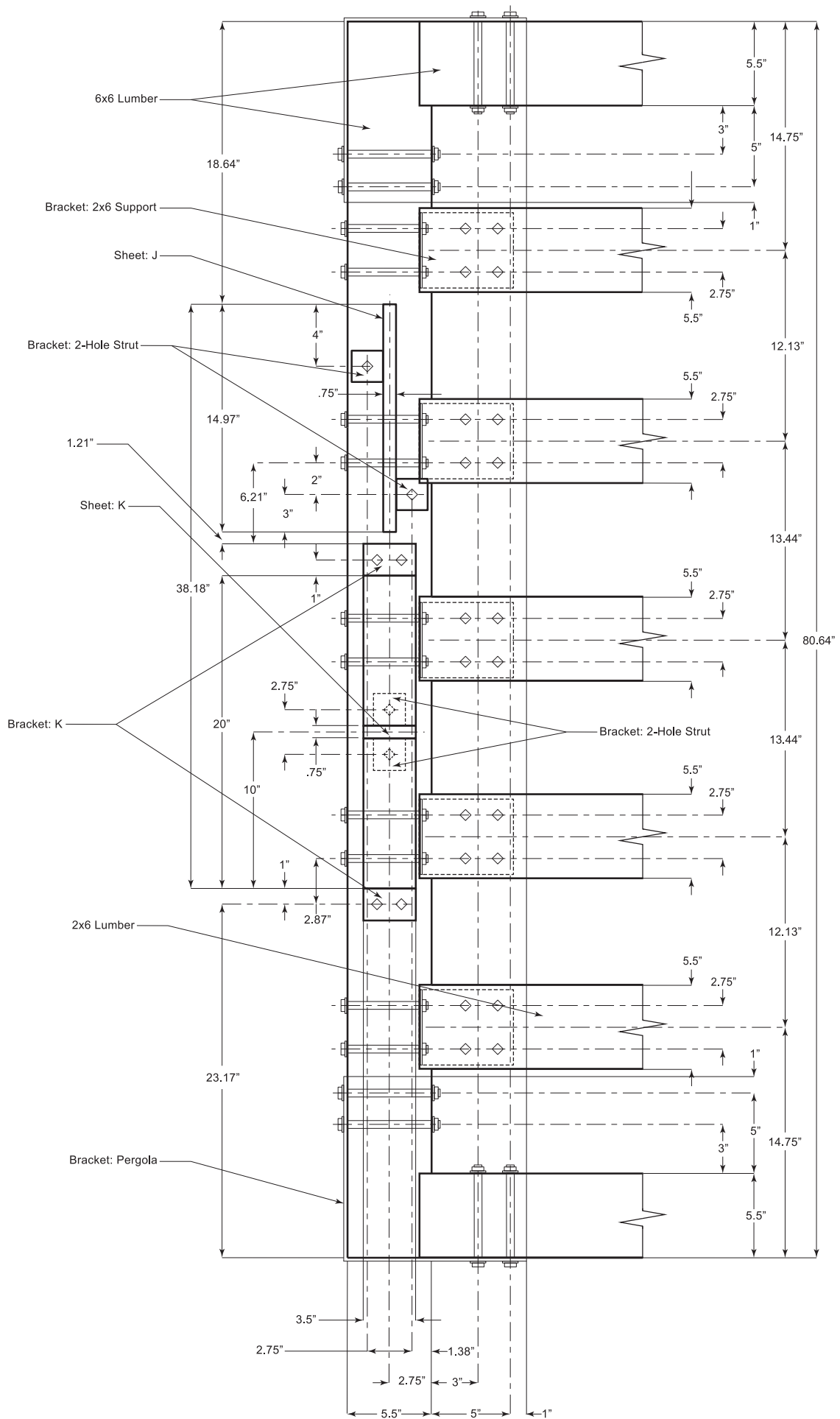


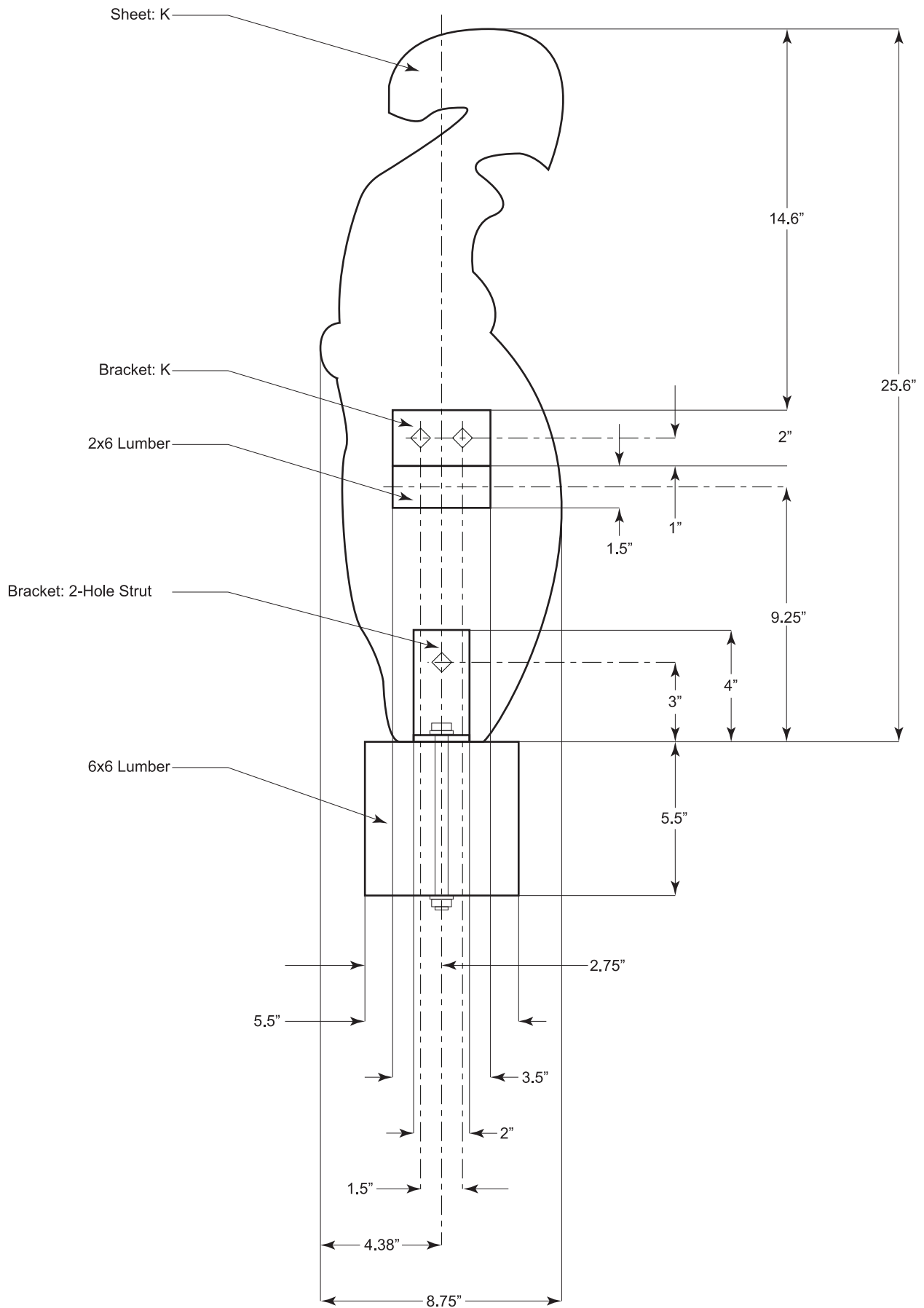






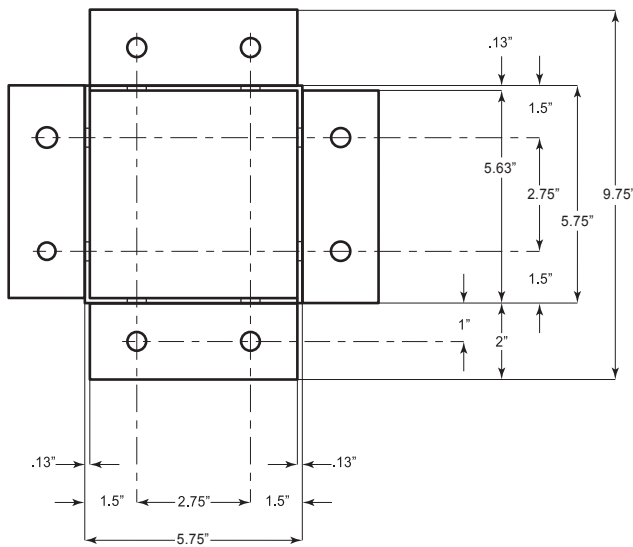




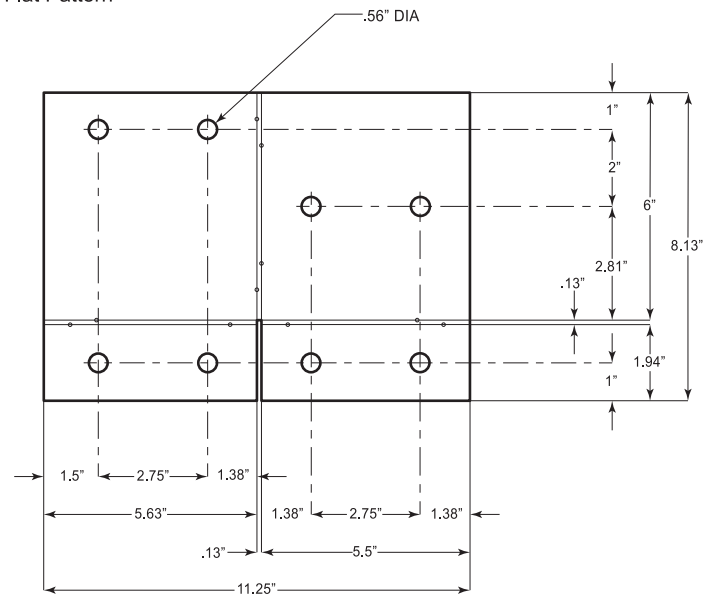




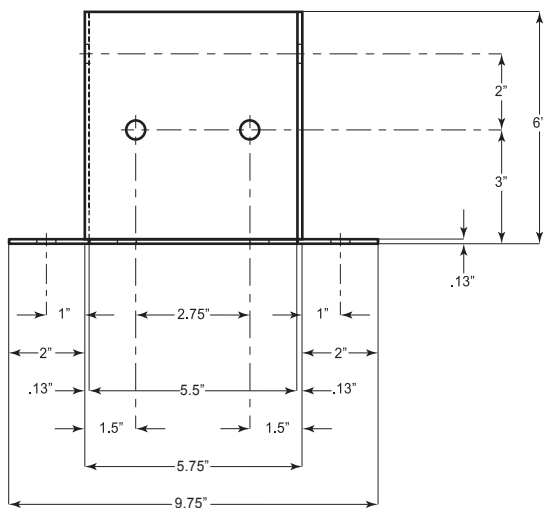
Plan View



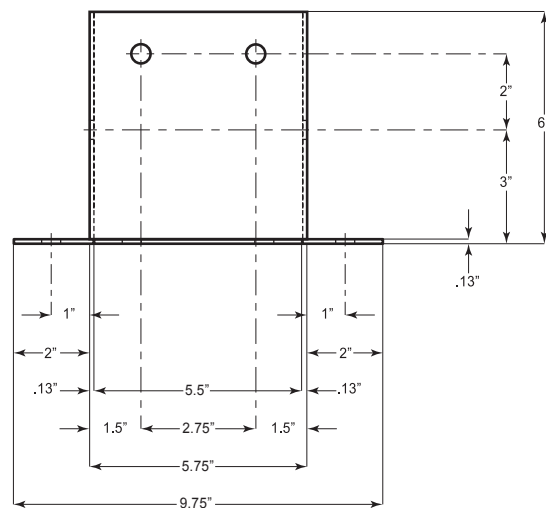
Flat Pattern

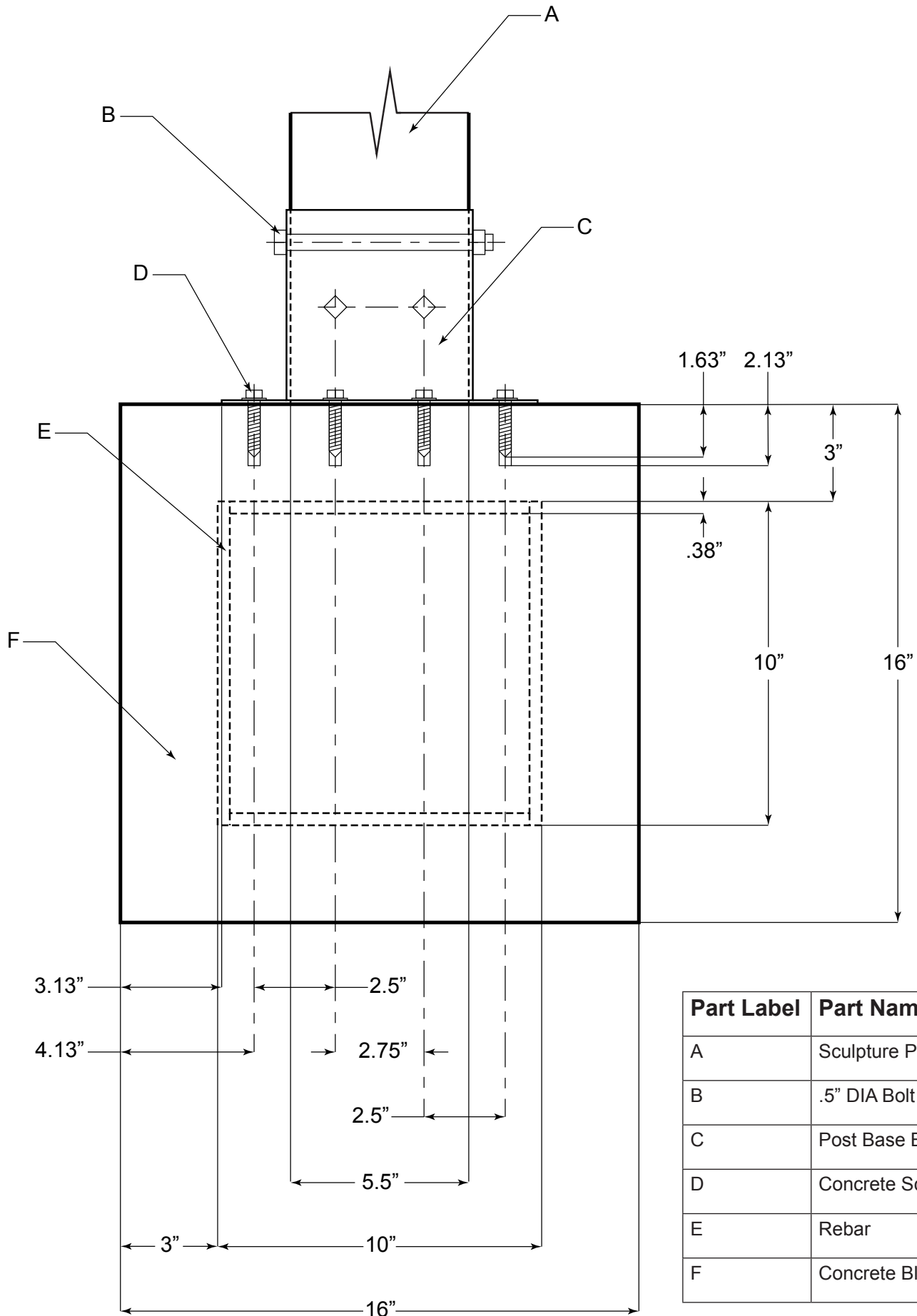


Front Elevation



Right Side Elevation





Part Label	Part Name
A	Sculpture Post
B	.5" DIA Bolt
C	Post Base Bracket
D	Concrete Screw Anchor
E	Rebar
F	Concrete Block

